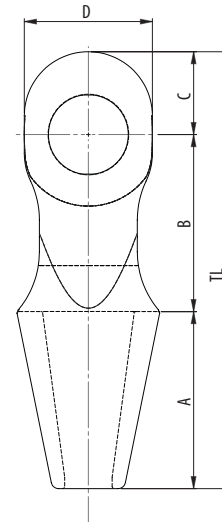
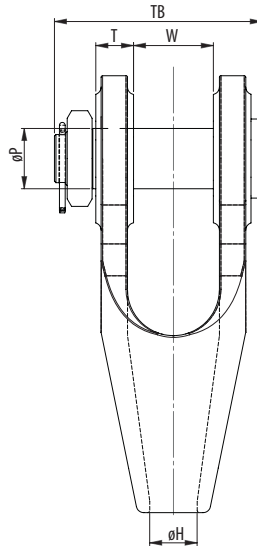


PORT INDUSTRY SOCKETS WITH BOLT AND NUT

QUENCHED AND TEMPERED CAST STEEL



| Model Nr. | MBL (Mtons) | for wire ø (mm) | Dimensions (mm) | | | | | | | | | | Weight (kg) |
|------------|-------------|-----------------|-----------------|-----|-----|-----|----|------|----|-----|-----|-----|-------------|
| | | | A | B | C | D | øH | øP | T | TL | TB | W | |
| OSS G5 B | 120 | 28-30 | 137 | 135 | 55 | 50 | 36 | 50,5 | 33 | 327 | 172 | 63 | 11 |
| OSS G6 B * | 150 | 31-34 | 155 | 150 | 60 | 110 | 42 | 55 | 37 | 365 | 197 | 70 | 16 |
| OSS G7 B | 170 | 35-38 | 176 | 170 | 70 | 120 | 47 | 60,5 | 41 | 416 | 215 | 80 | 22 |
| OSS G8 B | 225 | 39-43 | 198 | 190 | 80 | 135 | 52 | 70,5 | 46 | 468 | 242 | 90 | 28 |
| OSS G9 B * | 280 | 44-54 | 235 | 235 | 110 | 170 | 63 | 80 | 50 | 580 | 276 | 106 | 59 |
| OSS G10 B | 360 | 55-60 | 265 | 245 | 120 | 190 | 72 | 91 | 55 | 630 | 236 | 126 | 65 |

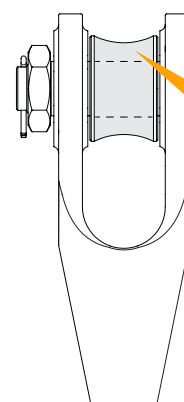
* AVAILABLE FROM STOCK

MBL = Minimum Breaking Load

- The standard finish of our sockets is blue. Hot dipped galvanized is also available.
- All sockets are provided with an EN 10204-2.1 declaration of conformity, EN 10204-3.1 material certificate and can be provided with a 2006/42/EC declaration where applicable.
- Dimensional tolerances depend on the manufacturing techniques applied and are different between machined components (pins) and cast components (socket bodies and wedges).
- Also surface finish e.g. hot dip galvanizing or even paint may add to the overall thickness and fork distance.
- Please contact Ropeblock for further guidance and a detailed dimensional tolerance sheet.



SEE OUR WARNING & SAFETY INFORMATION



Available with Roller